

April 2009

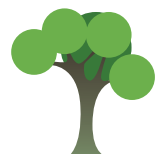
Integreat Yorkshire, growing people's skills to make great places

Regional supplement

Yorkshire and the Humber's response to the Sub National Review agenda.

Following on from the recent briefing on the regional impact of the Sub National Review (SNR), this paper provides some further regional detail, to inform discussions at the workshop on the 15 April 2009.

The region's key decision making body on the Integrated Regional Strategy is the Joint Regional Board. This comprises 16 members in total, with 8 being Members of the Yorkshire Forward Board, and 8 Local Authority Leaders, drawn from the Local Government Yorkshire and Humber (LGYH) Strategic Leaders Board. The Joint Regional Board will be designated the Regional Planning Body. To fulfill the legal requirements for the makeup of the Regional Planning Body, on occasions when the Board is taking formal planning decisions, an additional Member will join the Board to represent the National Parks, along with an additional Yorkshire Forward member to ensure numbers remain balanced.



Supporting the work of the Joint Regional Board (JRB) are 4 Thematic Boards, comprising:

- Work and Skills Partnership Board
- Spatial Planning Board
- Housing and Regeneration Board
- Transport Board

These Boards will be advising the JRB, and in most cases will not have delegated decision making powers. There are some slight exceptions to this, where the Thematic Boards will have delegated responsibility for decision making for the following:

- The Spatial Planning Board will be the statutory consultee on significant planning applications and issue opinions on the general conformity of Development Plan Documents.
- The Regional Transport Board will be responding to consultations on policy matters from the Department for Transport where the response does not require a significantly new policy position to be developed and agreed.

The stronger role for the Functional Sub Regions outlined in the SNR will be taken forward in the region with the Functional Sub Regions (Sheffield, Leeds and Hull & Humber Posts city regions, plus York & North Yorkshire sub region) having a key role to play in bridging between Local Authorities and Regional Structures.

There will be a strong feed in of evidence from the local level, particularly through the development of Local Economic Assessments. Regional guidance on these Assessments will be provided in May 2009, ensuring consistent elements are fed into the Integrated Regional Strategy (IRS), whilst retaining the flexibility to pick up specific local issues.

The relationship between these bodies and the different spatial scales is outlined in the diagram Figure 1.

Initial responses to the key questions

Whilst there is still much to discuss at the workshop on 15 April 2009, and beyond, there are some answers within the region already to the questions raised in the paper, as follows:

- How do all the scales of economic governance fit together cooperatively and collaboratively?



The regional governance structures are described in this paper, and visually represented in Figure 1. The key challenge is to ensure that the region develops a truly integrated strategy, which will require active policy integration across policy areas and spatial scales.

- How does the Government's response reflect the current economic downturn?

The new structures and plans for the IRS may not have planned in relation to the current recession, however the proposals to bring together spatial and economic planning through the IRS will still bring significant benefits to the region. The Government expects the IRS to focus on climate change issues, discussions about the opportunities for developing a low carbon economy will be a key element of the regions recovery from the recession, and an integral part of the IRS

- How can approaches to economic growth and economic development be twinned with tackling environmental issues?

The overarching goal of the IRS is to deliver Sustainable Economic Growth. The definition of this outlines how economic growth should seek to contribute to the environment and social welfare, with the ultimate aim of improving quality of life for the regions residents. There is still much to do to understand exactly how to achieve this goal.

- Can the Regional Development Agency work effectively with all local authorities in the region to develop strategy and devolve responsibility?

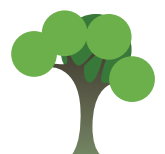
The regional governance structures have laid a strong foundation to enable effective collaboration. These structures have been held up nationally as an example of good practice in taking a collaborative approach, and were themselves based on the good track record of partnership working which already existed in the region.

- Do Regional Development Agencies have the strategic skills necessary to develop Integrated Regional Strategies?

The task of developing the IRS does not just fall to Regional Development Agencies. The approach will be collaborative with LGYH, including staff formerly at the Regional Assembly. Given the region has produced successive rounds of Regional Economic and Spatial Strategies, the region overall has the required skills and capacity to develop the IRS

- What is the Economic Assessment Duty going to actually require local authorities to do?

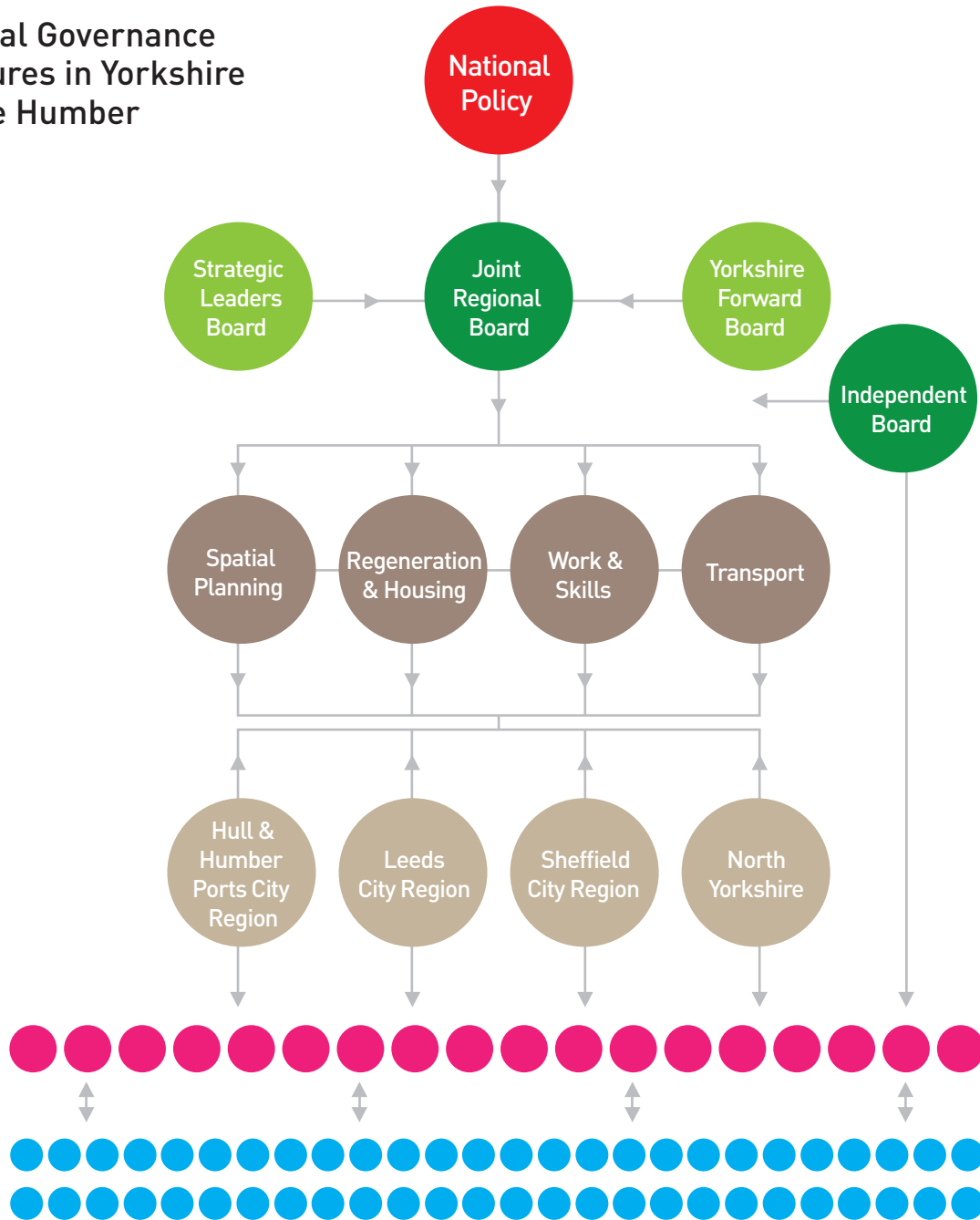
National guidance has begun to clarify this, the planned regional guidance will offer further clarity shortly.



Supported by

The Region's
Development Agency

Regional Governance Structures in Yorkshire and the Humber



In addition to being guided by National Policy, the new regional governance structures should also seek to influence national policy.

Yorkshire Forward and LGYH will retain their own Boards.

The Joint Regional Board (JRB) will deliver Sustainable Economic Growth in the region, through the setting of strategic objectives that integrate policy areas and the management of regional governance structures to harness talent and ambition.

The Thematic Boards will advise the JRB on relevant policy issues, and work alongside other Thematic Boards to develop an integrated approach to developing and delivering the Integrated Regional Strategy (IRS). The aim of each Board is to ensure that their policy areas maximises its contribution to the objectives of the IRS and the overall objective of Sustainable Economic Growth.

Functional Sub-Regions will be a bridge between local and regional discussion and activity. They will coordinate activity at local level to enhance consistency, and discuss and agree policy pertinent to their Sub-Region.

Local Authorities will inform the process of policy making, to ensure that their local circumstance is reflected in the Sub-Regional and Regional policies and strategies. Their activity will also be driven by priorities established regionally and sub-regionally.

Similarly to local authorities, local communities will both feed into policy making, and be guided by priorities established at higher spatial scales.

